





Total Technologies, Ltd®

"Cost Down and Quality Up™"

Total Technologies, Ltd. (TTL) is a highly diversified manufacturer of various OEM/ODM cable assemblies, adapters and multimedia interfaces, since 1982. With over 1,200 employees for Global support, 15 worldwide patents, and 60,000 designs, TTL is a promising and outstanding cable supplier. TTL currently produces 7 million assorted cable assemblies and adapters per month. TTL provides high quality products to many of the largest multimedia, telecommunication and computer related peripherals, components and accessories manufacturers in the world. TTL's ECO-Friendly products are designed to meet worldwide requirements such as RoHS, EPA, and California Proposition 65. TTL has been certified by Sony as their first Green Partner with a perfect rating in the cable and connector category. TTL offers excellent R&D design and engineering services, quick lead-time, plus sales and customer support at its offices in Irvine, California, Taiwan, China, Japan, and Germany.



U.S.A Headquarter



Taiwan Office



China factory

Why Choose TTL's HDMI Cable?

■ **HDMI™ ATC Compliance testing approved.**

On **October 6, 2004**, Total Technologies, Ltd. is proud to announce that its HDMI to HDMI (5 meter) cable has passed Silicon Image's ATC compliance testing. TTL's HDMI licensed product successfully completed ATC compliance testing in accordance with the HDMI Compliance Test Specification, revision 1.1.

■ **Benefits of the Patented RF-BLOK™ shielded design:**

1. ECO design.
2. Reduced interference from one piece seamless EMI/RFI shielded metal can.
3. No requirement of ferrite cores as signal loss and degradation are greatly reduced giving enhanced signal sharpness. Without the ferrite cores the cables is less stressed and more flexible.
4. No soldering requirements as interconnect design needs no 360° soldering - eliminating the possibility of human error and/or cracking of the solder that causes grounding intermittence and the use of the most hazardous waste material - soldering flux.
5. Increased insulation resistance up to 45%.
6. No inner mold-avoids the potential damage that can be occurred during injection molding process.
7. Smaller overall dimensions which allows more room behind the host or peripheral.

HDMI™
HIGH DEFINITION MULTIMEDIA INTERFACE



RF-BLOK™

Patent US 6,287,148 B1
US 6,776,665 B2
US D483, 373 S
Other worldwide patents pending



Total Technologies, Ltd[®]



S0182 Unique Connector System

** Industrial + Medical + Automotive Applications*

** Digital + Analog + Control + Power Signals All-In-One*



www.total-technologies.com

**TMDS, LVDS, Digital, Analog, Audio, MIC, USB,
DDC, Control, Plus 5 Amp Power Pins x 2,
ALL-IN-ONE Low Profile Connector Design.**

** 100% EMI RF-BLOK[™] shielded Metal Hood, resulting in no Ferrite Cores required.*

** High reliable patented SupraLok[™] design.*

** Cost effective product.*

** Fully shielded with all UL components.*



IN-WALL (PUSH-PULL) THREADED LOCK TYPE D-SUB TIGHT-FIT



IP65-IP68



Circular Din Male/Female



USB 3.0 Type A Male/Female



Circular Din 90° Female/Female



Circular Din Pull Cap



Circular Din 90° Female/Male



Circular Din 90° Female/Female



Universal Add-On Cap



Circular Din Female/Female



RJ 45 Male/Female



USB Type B Male/Female



BNC Male/Female



DVI Male/Female



DVI Male/Female w/Panel



VGA Male/Female



USB 2.0 Type A Male/Female w/Panel

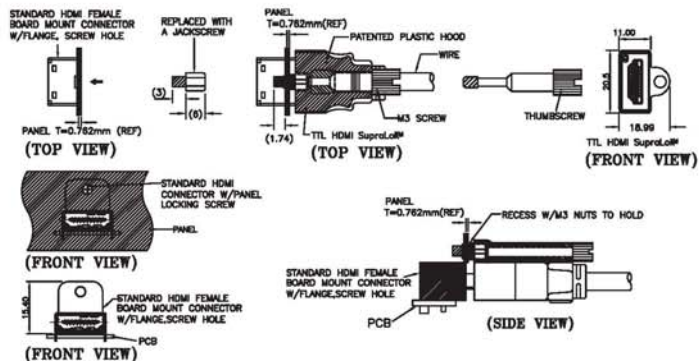


Total Technologies, Ltd[®]

SupraLoK™ system in action, confirmed by HDMI™ founders



TTL's patented (US 6,929,501 B2) uni-screw *supraLoK™* system is the first HDMI permanent locking system accepted and confirmed by HDMI LLC. founders. This legacy design is backwards compatible and easily to be adopted without changing any PCB footprint on existed HDMI connectors.



FEATURES AND BENEFITS:

- HDMI 19 pin receptacle with flange is currently a standard hdmi female receptacle.
- Legacy design is backwards with TTL patented US 6,929,501 B2 design.
- Existing PCB footprint on HDMI sinks and sources will not need to be changed.
- Easily adapt the *SupraLoK™* system by replacing the existing locking screws with a jackscrew.
- 100% mechanical fastening, utilizing an overmold alignment feature to aid the thumbscrew to screw/lock mating.
- HDMI cable plugs that use the *SupraLoK™* locking system are designed to avoid blocking any type of connector mounted close to the HDMI input/output.
- Overall height of the *SupraLoK™* interface is within the dimension of any flange mounted HDMI receptacle.
- The *SupraLoK™* locking design is an easy, quick, cost saving solution, designed to solve existing Intermittance, form, fit, and function problems the HDMI LLC and CE industry is currently faced with.

"Connect with TTL's new *SupraLoK™* to add value to your HDMI product line"

www.total-technologies.com

© 09-2006 Total Technologies, Ltd. All rights reserved. All trademarks/logos shown are owned by respective proprietors.



Total Technologies, Ltd[®]



HDMI/DVI Wall Plates with patented *SupraLok*[™] system



FEATURES:

- TTL's wall plates are now available in 1,2,3, and 4 port configurations. USA, UK, EU and other countries standard dimensions (with multiple gangs) are also available upon request.
- Each wall plate can be assembled with various HDMI and DVI patented adaptors from TTL, individually to provide the flexibility of cable inputs from straight, top, bottom, left and right side entries.
- Each individual TTL HDMI/HDMI, HDMI/DVI, DVI/DVI Adaptor is fully shielded with TTL's patented RF-BLOK[™] (Patent No.:US6,278,148 B1) Die-cast metal can to provide not only the best high frequency EMI/RFI shielding, but a very robust solution.
- All HDMI female adaptors are designed with TTL's patented SupraLok[™] locking system (Patent No.: US 6,929,501 B2) to provide temporary and permanent locking connections, in order to prevent any cable weight/stress hanging problems.
- TTL's Patented HDMI and DVI Super Slim And Compact (SSAC[™]) size adaptors provide minimum signal loss, with an easy form fitting, all-in-one interconnect.
- Environment protection (Eco-Friendly) products are manufactured to meet RoHS and worldwide requirements.
- TTL wall plates are made with a deluxe stainless steel plate. Plastic materials will also available upon request.
- DVI in-wall installation, TTL has the best design to fit standard conduit up to 15 meters (P/N: DVIM-IWD-15M) long.
- TTL's famous SLAC[™] and Hi-PQ[™] long distance cables are also available with NEC CL2, CL2R, and CL3 rated wires upon request.
- TTL's wall plates can be purchased with pre-assembled HDMI or DVI adaptors, per our customer's request. Also, the stainless wall plates and the HDMI/DVI adaptors can be purchase separately to create maximum solution for different combinations during any installation.

U.S. Headquarter

(800) 669-4885 or NOW-4-TTL
Tel: (949) 465-0200
Fax: (949) 465-0212
ttlus@total-technologies.com

Taiwan Office

Tel: 886-2-8797-6868
Fax: 886-2-8797-6969
total@ttltpc.com.tw

TTL Network GmbH

Tel: 49-5201-7361-10
Fax: 49-5201-7361-17
info@ttl-network.de

Japan Office

Tel: 81-426-45-0092
Fax: 81-426-45-2837
ttl-japan@nifty.com

www.total-technologies.com

© 09-2006 Total Technologies, Ltd. All rights reserved. All trademarks/logos shown are owned by respective proprietors.

Adapters / Wall Plates



Multi-Connector / HDMI



Wire Harness Assemblies





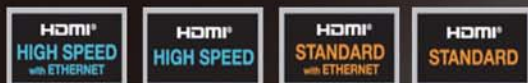
Total Technologies, Ltd®

HDMI™
HIGH DEFINITION MULTIMEDIA INTERFACE

1st in the WORLD



LONGEST
in the World



INDUSTRIAL CABLES

MEDICAL CABLES

CUSTOMER MADE CONNECTORS & CABLES

SNAKE CABLES

WIRE HARNESS ASSEMBLIES

USB 3.0 CABLES, SATA CABLES

DisplayPort (Mini-DisplayPort) CABLES

WATERPROOF CABLES (IP65-IP68)

WALL PLATES



leadfree



HDMI FEMALE CABLE TYPE
WITH DIE CAST CAN™
WITH SUPRALOK™
WITH PANEL MOUNT
COPYRIGHT



USB LOCKING TYPE



HDMI 90 DEGREE TYPE
WITH DIE CAST CAN



SATA LATCH/SCREW TYPE



Total Technologies, Ltd.® is the First Cable Company in the World to Pass
HIGH SPEED HDMI™ with Ethernet testing and received the Longest Cable approval.



Total Technologies, Ltd.®



Standard A to Standard B



Standard A to Standard A

Move on to the next generation

USB 3.0 . SuperSpeed bus

Comparing SuperSpeed to USB 2.0

Characteristic	SuperSpeed USB	USB 2.0
Data Rate	SuperSpeed (5.0 Gbps)	low-speed (1.5 Mbps), full-speed (12 Mbps), and high-speed (480 Mbps)
Data Interface	Dual-simplex, four-wire differential signaling separate from USB 2.0 signaling Simultaneous bi-directional data flows	Half-duplex two-wire differential signaling Unidirectional data flow with negotiated directional bus transitions
Cable signal count	Six: Four for SuperSpeed data path Two for non-SuperSpeed data path	Two: Two for low-speed/full-speed/highspeed data path
Bus transaction protocol	Host directed, asynchronous traffic flow Packet traffic is explicitly routed	Host directed, polled traffic flow Packet traffic is broadcast to all devices.
Power management	Multi-level link power management supporting idle, sleep, and suspend states. Link-, Device-, and Function-level power management.	Port-level suspend with two levels of entry/exit latency Device-level power management
Bus power	Same as for USB 2.0 with a 50% increase for unconfigured power and an 80% increase for configured power	Support for low/high bus-powered devices with lower power limits for un-configured and suspended devices
Port State	Port hardware detects connect events and brings the port into operational state ready for SuperSpeed data communication.	Port hardware detects connect events. System software uses port commands to transition the port into an enabled state (i.e., can do USB data communication flows).
Data transfer types	USB 2.0 types with SuperSpeed constraints. Bulk has streams capability (refer to Section 3.2.8)	Four data transfer types: control, bulk, Interrupt, and Isochronous



Total Technologies, Ltd.®



DisplayPort - DVI



DisplayPort - HDMI



DisplayPort - HDMI



DVI - Mini-DisplayPort



Mini-DisplayPort - VGA

Next Generation
Digital Display technology

DisplayPort . Cables / Adaptors

The fastest refresh rates.

Billions of colors. Crystal-clear audio.

Get the most out of Blu-Ray and 3D graphics.

The deepest color depths. Powered connectors.



DisplayPort - DisplayPort



DisplayPort - DVI



DisplayPort - DVI



HDMI - DisplayPort

Mini-DisplayPort . VGA . DVI . HDMI . DisplayPort

www.total-technologies.com



TTL®

SATA

able 26AWG TOTAL

SATA

SATA LATCH-TYPE

Serial ATA-I / II with overall metal shielding also available!



- SATA II

Serial ATA is an evolutionary replacement for the Parallel ATA physical storage interface. Serial ATA is scalable and will allow future enhancements to the computing platform.

- Scalability—Serial ATA is a **point-to-point connection** and allows multiple ports to be aggregated into a single controller that is typically located either on the motherboard or as an add-in, RAID card
- Performance—Serial ATA technology will deliver **1.5 Gbps (150 MB/sec)** of performance to each drive within a disk drive array.
- Cabling—Serial ATA specifies a thin, point-to-point connection which allows for easy cable routing within a system. **This avoids master/slave, "daisy-chaining", and termination issues.** Also, better airflow can be realized compared to systems with wider ribbon cables.



Product List





Total Technologies, Ltd.®

Your Reliable Manufacturing Partner Since 1982.

Since 2002, Total Technologies, Ltd.® has been certified by SONY® as a Green Partner.



**PoHS
REACH**



**California
PROP.65**



**EPSON
Certification**



**FUJITSU
Notification**



**SONY
Green Partner**

